

H940C eco

Tier 4 Final Engine Installed

* Photo may include optional equipment.



Head Office(Sales Office)
11F, GLOBAL R&D CENTER, 477 BUNDANG SUSEO-RO, BUNDANG-GU, SEONGNAM-SI, GYEONGGI-DO, 13553, KOREA

PLEASE CONTACT

Gross Power
100HP (74.5 kW) / 2,200 rpm

Net Power
97HP (72.3kW) / 2,200 rpm

Bucket Capacity
Backhoe 0.17 m³~0.23 m³
Loader 0.7 m³~1.0 m³

Operating Weight
7,500 kg (16,960 lb)



PRIDE AT WORK

Hyundai strives to build state-of-the-art earthmoving equipment to give every operator maximum performance, more precision, versatile machine preferences, and proven quality. Take pride in your work with a Hyundai!

H940C

POWERFUL AND RELIABLE ENGINE

HYUNDAI engine, with EPA Tier 4 Final emission regulations, built for power, reliability and efficiency.

COMFORTABLE OPERATION

- Six pillared cabin with ROPS / FOPS certified design for safe operation.
- Tilting, adjustable steering column.
- Hinged-type side windows for excellent ventilation.
- Conveniently located gauges, switches and levers for quick and easy use.
- Suspension seat with full adjustment for improved operator ride.

EXCELLENT BACKHOE PERFORMANCE

- Pilot controls provide the operator with better precision and control.
- An extendable dipper significantly increases the machine's versatility. **Option**
- Unique backhoe boom design provides good visibility.

EXCELLENT VISIBILITY

- One piece rounded wind shield for wide span of view.
- Well designed loader frame offers clear line of site and excellent visibility.

SERVICEABILITY

- Tilt-up hood provides easy access to engine compartment.
- All greasing points are accessible from ground level for safety and reduced maintenance time.
- Integrated safety bar and lock system ensures operator safety.

POWERFUL LOADER PERFORMANCE

- Four wheel drive system designed for on-the-go activation improves loader performance in rough terrain conditions.
- A strong and rigid loader frame designed for durability and greater lifting capacity.
- Automatic return-to-dig function reduces loading cycle times.

ENHANCED HYDRAULIC MECHANISM

- Adjustable flow control system (AFCS) optimizes the travel power of the machine when traveling on the highway.
- Alternative pilot control pattern allows the operator to get the job done efficiently.
- Stabilizer safety system protects from both raises and lowers of the stabilizer.



* Photo may include optional equipment.



TIER 4 FINAL Certified Engine

The Hyundai engine is EPA Tier 4 Final compliant with a 4-cylinder, 4-cycle, turbo-charged design, delivering power, reliability, and efficiency. It features a robust aftertreatment system and a no EGR configuration for advanced emission control and simplified maintenance.



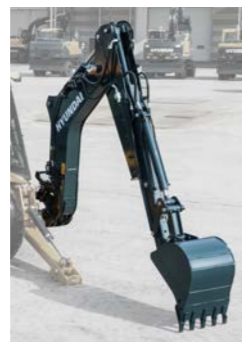
Durable Axle and Brakes

Front & rear axles are designed for heavy duty to withstand the challenging Jobsite conditions. Outboard, planetary gears improve serviceability while multi wet disc type brakes eliminate possible external contamination.

The parking brake can be easily activated from within the cabin by the push of an electric switch.

Excellent Backhoe Performance

The backhoe is inherently strong design, perfect for heavy duty applications. The boom allows good visibility into the trench when the operator is digging around buried obstructions such as water mains, sewer pipes, utility lines, etc.



Pilot controls improve operator control and precision when excavating. And an extendable dipper as an option significantly increases the machine's versatility.

Cushioned Cylinders

Protects cylinders and backhoe structural elements

- Boom Raise
- Dipper In

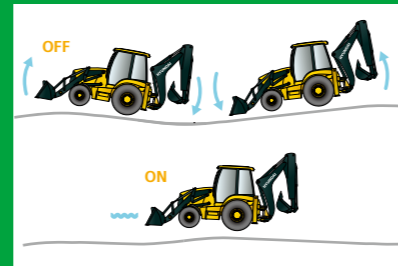
Four Wheel Drive

Four wheel drive system improves mobility and loader performance in ground conditions underfoot and can be activated on-the-go.



Ride Control System Option

Ride control system is available for improved operator comfort. Ride control reduces bounce and shock when traveling on the job site. The system is designed to minimize loader lift bounce when traveling over rough terrain to reduce material spillage and improve travel with a full bucket. The operator can engage ride control by flipping the switch on the side console. Ride control improves job site productivity, operator comfort and overall safety.



Powerful Loader Performance

The H940C series loader boom is integrally welded with a large diameter tube, dual lift and tilt cylinders for maximum strength and power. A strong and rigid loader frame allows for greater lift capacity, improved line of site and overall visibility. The loader attachment can be equipped with automatic return to dig function as an option designed to reduce loading cycle times.



OUTSTANDING PERFORMANCE

H940C provides the operator with best performance and productivity.



* Photo may include optional equipment.

Control Pattern Selector Option

The control pattern selector switch, located in the cabin, allows the operator to change from the excavator ISO control pattern to the backhoe SAE control pattern (Hyundai A type) for the backhoe simply by pressing a button. This allows the operator to use the accustomed pattern they are familiar with to get the job done efficiently.

Adjustable Flow Control System [AFCS]

By using the "turtle" switch ("turtle" for low speed attachment control) on the front instrument cluster, the operator diverts any unused hydraulic fluid from the second pump to the hydraulic reservoir. In a loader application, AFCS optimizes the travel power of the machine and improves productivity. AFCS is also useful when traveling on the road.

ENHANCED HYDRAULIC MECHANISM

Innovative hydraulic technologies make the H940C series fast, smooth and easy to control.



* Photo may include optional equipment.

Climate Control System Option

A full heating, defrosting system keeps the operator comfortable with 15 air vents placed throughout the cabin. Air conditioning system as an option well placed air vents within front, back and sides of seat provides operator with optimum temperature.



Comfortable Operator's Cabin

The H940C series cabin is designed to offer maximum comfort, safety and low noise to the operator. The cabin structure is supported by six pillars meeting ROPS/FOPS safety requirements. The cabin also offers dual entry, deluxe trim, tilt steering column and a washable molded floor mat. Large roomy cabin space and rounded glass contribute to operator comfort. Adjustable seat for a wider operating range and more comfortable ride. Equipped with seat cushion extension, seat cushion tilt, and vertical angle adjusting armrests.

Excellent Visibility

One-piece rounded front glass and large windows around the cabin provide the operator with a full 360 degree range of visibility. Wide upper front window good visibility to cutting edge of bucket for loader. Sloped and narrow bonnet is designed for easy and safe work with the front loader.

Side Console with Full Instrumentation

In the H940C series cabin, all gauges switches and levers are conveniently located for easy access. Whether in the loader position or the backhoe position, the operator can easily reach all controls.

Pilot control safety system

Disables the control lever of loader, backhoe (excavator), and stabilizer levers by flipping the safety switch on the side console

Safety Switch
(loader)



Safety Switch
(backhoe)



Power Boosted Brake

Newly developed Boosted Brake System now allows the operator to use brake much conveniently with additional hydraulic assisted power.

Brakes

Oil immersed wet disc brakes are individually actuated by two separated brake pedals. Brakes are self adjusting for improved service life.



Power Shift Transmission

Standard power shift transmission provides fast, easy and efficient operation. A convenient gear/shift selector allows for gear selection and forward, neutral or reverse direction.



* Photo may include optional equipment.



COMFORTABLE OPERATION

H940C series backhoe loaders are designed for the operator's comfort. The steering column and backhoe control tower can be tilted and adjusted for convenient operation. Deluxe, joystick levers, conveniently located switches and an AM/FM radio with mp3 input provide the pleasant operation. Hinge-type side windows can be opened for improved ventilation. Additionally, front and rear windshield wipers are equipped for excellent visibility during bad weather conditions.



* Photo may include optional equipment.

SERVICEABILITY

Quick and Easy Maintenance

Tilt-up hood provides easy access to the engine compartment. The one-piece hood tilts away for easy ground access to all critical services and grease points for maintenance and operator safety.



Integrated Safety Bar

An integrated safety bar and locking pin are an integral part of the bucket cylinder, and guarantee operator safety when servicing.



Visible Hydraulic Oil Level Gauge

The hydraulic oil sight gauge is installed on the side of the hydraulic tank for the convenient inspection from on ground level.

SPECIFICATIONS

ENGINE SYSTEM

| | | |
|-----------------------------|--------------------------------------|------------------------------|
| Maker / Model | Hyundai DN03-LEL40 | |
| Type | 4-stroke, water cooled turbocharged. | |
| Non-road emission standards | Certified to EPA Tier 4 Final | |
| Displacement | 3.4 ℓ | |
| Fuel | Diesel | |
| Horsepower | Gross | 100 hp (74.5 kW) @ 2,200 rpm |
| | Net | 97 HP (72.3 kW) / 2,200 rpm |
| Maximum torque | 41.6kg·m @ 1,350 rpm | |

HYDRAULIC SYSTEM

| | | |
|--------------------|--|--|
| System type | Open center | |
| Pump type | Gear pump | |
| Pump flow | 138.4 L/min (Steering + Attachment) | |
| System Pressure | 250 kg/cm ² | |
| Loader valve | - Mechanical control (Standard) : 1 Lever - Pilot control (Option) : 1 Joystick, Boom float, Bucket return to dig | |
| Backhoe valve | - Pilot control : 2 Joysticks Pilot control (Excavator ISO control pattern is standard) Optional pattern change valve for excavator (ISO) control pattern ↔ Backhoe (SAE) control pattern | |
| Stabilizer Control | - Pilot Control : 2 small levers - Stabilizer Safety lock valve (Standard) | |

ELECTRICAL

| | | |
|------------|----------------------------|--|
| Voltage | 12 volts | |
| Alternator | 140 amp | |
| Battery | 1,000 CCA (Standard) = 1EA | |

OPERATING WEIGHTS

| | | |
|------------------------|--|----------|
| Standard configuration | 4WD, GP bucket (0.8m ³) ROPS/FOPS, Canopy, Mono Dipper | 7,500 kg |
| Add-on weight | Counter weight | 550 kg |
| | Drive shaft & T/M under guard | 55 kg |
| | Fork | 170 kg |

TIRES

| | | |
|-------|------------------------|--|
| Front | 12.5/80-18, 12PR (4WD) | |
| Rear | 16.9-28, 12PR | |

SERVICE REFILL CAPACITIES

| | |
|-----------------------------------|--------------------|
| Fuel tank | 130 ℓ |
| Ureare Tank | 15 ℓ |
| Aftertreatment System | DOC, DPF, SCR, VGT |
| Cooling system | 18.5 ℓ |
| Engine oil with filter | 12.6 ℓ |
| Hyd. tank with filter | 50 ℓ |
| Hyd. system total | 93 ℓ |
| Transmission and torque converter | 18 ℓ |
| Front axle (4WD) | 8 ℓ |
| Rear axle | 16 ℓ |

BACKHOE ATTACHMENTS

| | |
|---------|-------------------------------|
| Buckets | 0.2 m ³ (STD) |
| | 0.17 m ³ |
| | 0.26 m ³ |
| Boom | 2.63 m (STD) 2.81 m |
| Arm | 2.0 m (STD) 2.0 m ~ 3.12 m |

LOADER BUCKETS

| Capacity | Remark | Capacity | Remark |
|--------------------|---------------|--------------------|--------------|
| 0.8 m ³ | GP BOCE (STD) | 0.9 m ³ | GP Tooth |
| 1.0 m ³ | GP BOCE | 1.0 m ³ | MP |
| 0.7 m ³ | GP Tooth | 1.0 m ³ | MP with Fork |

*GP : General Purpose, MP : Multi Purpose

*BOCE : Bolt on Cutting Edge

COUNTER WEIGHT

| Description | Weight |
|---------------------------------------|--------|
| None, Guard Front | 10 kg |
| Casting, Additional | 150 kg |
| Casting (STD) | 350 kg |
| Casting Additional for Telescopic Arm | 550 kg |

Maximum travel speed with standard tire

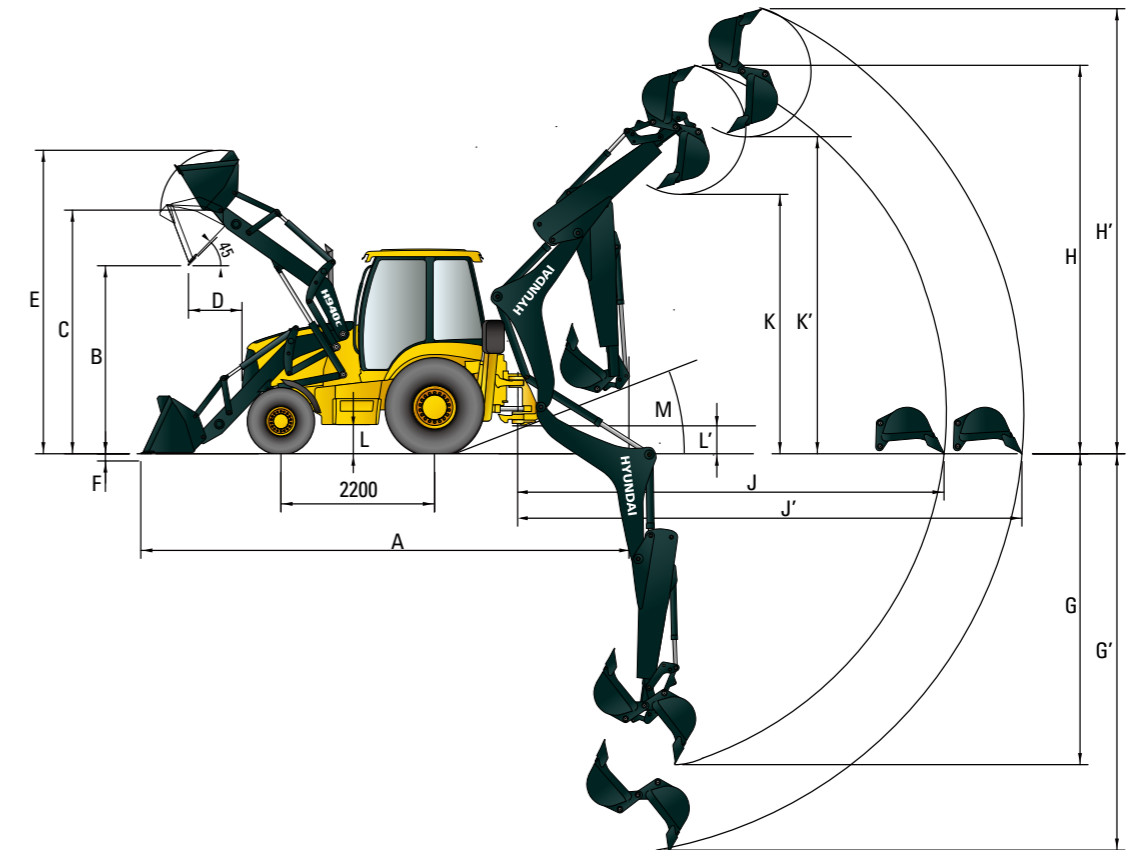
| H940C | Gear 1 | Gear 2 | Gear 3 | Gear 4 |
|--------------------------|--------|--------|--------|--------|
| Forward (km/hr) | 5.2 | 9.6 | 19.4 | 34.0 |
| Reverse (km/hr) (Option) | 6.6 | 12.0 | 19.0 | N/A |

| | | |
|-------------------|--|--|
| Torque converter | Single stage, dual phase | |
| Differential | Push-button activation | |
| Steering (Option) | Hydrostatic power (emergency steering) | |
| Brake | Service | Power assisted, hydraulic wet disc, mounted inboard, self-adjusting and self-equalizing |
| | Parking | Spring-applied, hydraulically releases, wet, multi disc independent of service brakes with electric switch control |

DIMENSIONS & WORKING RANGE

DIMENSIONS

All dimensions are approximate.



Unit : mm (ft-in)

DESCRIPTION

| | | |
|----|-------------------------|-----------------|
| A | Overall length | 7,080 (23' 3") |
| B | Dump clearance | 2,710 (8' 11") |
| C | Hinge pin height | 3,450 (11' 4") |
| D | Dump reach | 805 (2' 8") |
| E | Max loading height | 4,230 (13' 11") |
| F | Depth of bucket down | 96 (0' 4") |
| G | Max digging depth (STD) | 4,345 (14' 3") |
| G' | Max digging depth (EXT) | 5,460 (17' 11") |

DESCRIPTION

| | | |
|----|--------------------------|-----------------|
| H | Max digging height (STD) | 5,500 (18' 1") |
| H' | Max digging height (EXT) | 6,150 (20' 2") |
| J | Max digging reach (STD) | 5,830 (19' 2") |
| J' | Max digging reach (EXT) | 6,860 (22' 6") |
| K | Max dumping height (STD) | 3,585 (11' 9") |
| K' | Max dumping height (EXT) | 4,230 (13' 11") |
| L | Minimum ground clearance | 261 (0' 10") |
| L' | Height of outrigger | 355 (1' 2") |
| M | Departure angle | 19° |

BUCKETS

| | GP Bucket | MP Bucket |
|------------------|----------------|----------------|
| Transport length | 7,080 (23' 3") | 7,210 (23' 8") |
| Transport height | 3,680 (12' 1") | 3,680 (12' 5") |
| Transport width | 2,250 (7' 5") | 2,300 (7' 7") |

STANDARD / OPTION

MEMO

| ENGINE | STD | OPT |
|--|-----|-----|
| HYUNDAI DN03-LEL40 | ● | |
| HYDRAULIC SYSTEM | | |
| Fan, suction | ● | |
| Hydraulic hose face seals, o-ring | ● | |
| Hydraulic oil cooler, T/M cooler | ● | |
| Hydraulic valves, loader 3rd Function | | ● |
| Hydraulic valves, backhoe 7th Function | | ● |
| Hydraulic lines One-way, backhoe breaker line | | ● |
| Pilot control (Backhoe, Loader, Stabilizers all together) | ● | |
| CABIN & INTERIOR | | |
| Air cleaner | ● | |
| Alarm, back-up | ● | |
| Radio | | ● |
| Coolant/Antifreeze | ● | |
| Floor mat | ● | |
| Gauges : coolant temperature, fuel level, tachometer, hour meter | ● | |
| Indicators: Engine oil pressure, T/M oil temp, diff. lock, coolant temp, fuel level, battery charge, air cleaner, high beam, parking | ● | |
| Instrument panel lights | ● | |
| Seat belt, retractable (51 mm / 2 in) | ● | |
| Seat, suspension with armrest | ● | |
| Storage compartment, internal | ● | |
| Throttles, hand and foot | ● | |
| Transmission neutralizer button switch | ● | |
| Air conditioner & Heater | | ● |
| Fuel warmer | | ● |
| Speed meter | ● | |
| Climate control system | | ● |
| Cabin ROPS / FOPS | | ● |
| Canopy ROPS / FOPS | | ● |
| SAFETY | | |
| Differential lock | ● | |
| Brakes, oil disc, dual pedals, interlocking | ● | |
| Flashing hazard/signal lights | ● | |
| Working lights (2 front, 2 rear) | ● | |
| Machine security system | ● | |
| Mirror, rear view | ● | |
| Parking brake | ● | |
| Stop and tail lights | ● | |
| Swing transport lock | ● | |
| Warning horn, electric | ● | |
| Grill guard bumper | | ● |
| Front drive shaft guards | | ● |
| Work lights (4 front, 4 rear) | | ● |
| Rotating beacon | | ● |
| Power boosted brake | ● | |
| Pilot control safety system | ● | |

* Standard and optional equipment may vary. Contact your Hyundai dealer for more information. The machine may vary according to International standards.

* The photos may include attachments and optional equipment that are not available in your area.

* Materials and specifications are subject to change without advance notice.

* All imperial measurements rounded off to the nearest pound or inch.

| ATTACHMENT | STD | OPT |
|---|-----|-----|
| Stabilizers (Pad for street) | | ● |
| BACKHOE | | |
| Buckets | | |
| 0.2 m ³ (0.26 yd ³) | ● | |
| 0.17 m ³ (0.22 yd ³) | | ● |
| 0.26 m ³ (0.34 yd ³) | | ● |
| Boom | | |
| 2.63 m for Heavy duty | ● | |
| 2.81 m Long | | ● |
| Dipper | | |
| 2.00 m ~3.12 m (Telescopic) | | ● |
| 2.00 m | ● | |
| Front loader | | |
| General purpose buckets | | |
| 0.8 m ³ (1.04 yd ³) - Bolt-on cutting edge | ● | |
| 0.7 m ³ (0.92 yd ³) - Bolt-on teeth | | ● |
| 0.9 m ³ (1.18 yd ³) - Bolt-on teeth | | ● |
| 1.0 m ³ (1.31 yd ³) - Bolt-on cutting edge | | ● |
| Multi purpose buckets | | |
| 1.0 m ³ (1.3 yd ³) | | ● |
| 1.0 m ³ (1.3 yd ³) w/ forks | | ● |
| OTHER | | |
| Battery, maintenance-free, 1000 CCA x 1 | ● | |
| Battery disconnect switch | ● | |
| Filters, spin-on | ● | |
| Fuel prefilter with water separator | ● | |
| Glow plug (cold starting aid) | ● | |
| Ground level fuel fill | ● | |
| Power receptacle, 12V | ● | |
| Power steering, hydrostatic | ● | |
| Emergency steering | | ● |
| Toolbox, external, lockable | ● | |
| Torque converter | ● | |
| Transmission : Power shift, 4 forward, 3 reverse, 4 wheel drive | ● | |
| Boom transport lock - Backhoe (Cylinder) | ● | |
| Boom locking bar - Loader | ● | |
| Mechanical quick coupler | | ● |
| Counter weights | | |
| Guard front, 10 kg (22 lb) | ● | |
| Casting, 150 kg (331 lb) | | ● |
| Casting, 350 kg (772 lb) | | ● |
| Casting additional for telescopic arm, 550 kg (1,213 lb) | | ● |
| Return-to-dig, loader | | ● |
| Ride control, loader | | ● |
| Control pattern selector | | ● |
| UNDERCARRIAGE | | |
| Fenders, rear | ● | |
| Fenders, front | | ● |
| Tilt steering wheel | ● | |
| Tire : (Front) 12.5/80-18, (Rear) 16.9-28 | | ● |
| Tire : (Front) 12.5/80-18, (Rear) 19.5-24 | ● | |